

# MEN & MICE SUITE

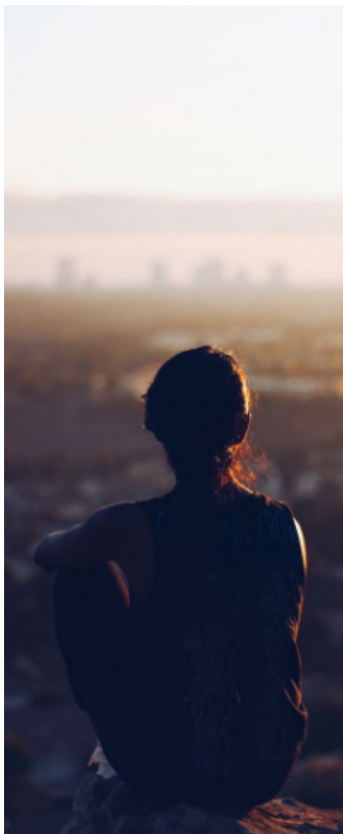
For efficient and secure **DNS, DHCP** and **IP Address Management**

## LEADERSHIP AND INNOVATION SINCE 1990

For over 25 years Men & Mice has been a leading global expert in the field of DNS, DHCP, and IP Address Management (IPAM).

The Men & Mice Suite is built to meet the challenges of DDI management in large and growing enterprise networks through simplified and streamlined IP Address Management administration.

Men & Mice solutions are supported around the clock by our technical services team.



### The sensible approach to IP Address Management

The Men & Mice Suite enables centralized control of DNS, DHCP, and IP Address Management (DDI) by integrating all functionality into a single, unified management interface.

A feature-rich overlay solution, the Men & Mice Suite effortlessly solves many of the challenges facing administrators in complex multi-server environments. Main benefits are:

- One, single pane of glass for viewing - and controlling - all IP infrastructure: DNS, DHCP and IP addresses
- Intuitive overlay design that extends existing network infrastructure
- Fast, non-invasive, non-disruptive deployment
- Core Microsoft Active Directory Sites and Subnets integration
- Instant, real-time synchronization and updates between critical IPAM, DNS and DHCP components
- Versatile architecture for painless scalability across diverse platforms
- Straightforward GUI and web interface for optimal system manageability
- Strong, solid APIs for customized user application capabilities
- Refined role-based user access management to expand network security
- System Health Monitoring for optimal network availability

### Versatility in DNS and DHCP management

The Men & Mice Suite significantly simplifies network administration, making it more efficient, reliable and secure, for network administrators and enterprises alike.

As a robust management solution deployed on top of existing IP infrastructure, the Men & Mice Suite pulls critical data from an enterprise's DNS and DHCP servers, Active Directory, and routers and switches, and consolidates it in a single management interface for a comprehensive overview and definitive control. Support for BIND, Unbound, Microsoft DNS, PowerDNS, Microsoft DHCP, Cisco IOS DHCP, Kea DHCP and ISC DHCP means the Suite easily bridges operational gaps in hybrid environments and ensures that the solution will scale well with growing enterprises.

In keeping with increased platform diversity, the Men & Mice Suite also supports OpenStack, Microsoft Azure DNS and AWS Amazon Route 53, giving customers free reign to extend their infrastructure into the cloud if and when they need it.

The Men & Mice Suite can be deployed as a software solution, or as virtual appliances providing solid and secure DNS/DHCP services.

Range	Title	Type	Utilization	Router Name	Gateway	Interface ID	Interface Name	Interface Desc	VLAN ID
172.31.11.0/27		Range	10%	LAB-R1.dsco-L	172.31.11.1	19	Loopback21		
172.31.11.32/27		Range	47%	LAB-R1.dsco-L	172.31.11.33	20	Loopback22		
172.31.11.64/27		Range	47%	LAB-R1.dsco-L	172.31.11.65	21	Loopback23		
172.31.11.96/27		Range	50%	LAB-R1.dsco-L	172.31.11.97	22	Loopback24		
172.31.11.128/...		Range	20%	LAB-R1.dsco-L	172.31.11.129	23	Loopback25		
172.31.11.160/...		Range	0%	LAB-R1.dsco-L	172.31.11.161	24	Loopback26		
172.31.11.192/...		Range	4%	LAB-R1.dsco-L	172.31.11.193	25	Loopback27		
172.31.11.224/...		Range	0%	LAB-R1.dsco-L	172.31.11.225	26	Loopback28		
172.31.12.0/24		Range	0%	LAB-R1.dsco-L	172.31.12.1	9	Loopback10		
172.31.13.0/24		Range	19%	LAB-R1.dsco-L	172.31.13.1	18	Loopback20		
172.31.99.0/24		Range	1%	LAB-R1.dsco-L	172.31.99.1	29	FastEthernet0/0	66	
172.31.255.0/24		Range	2%	LAB-R1.dsco-L	172.31.255.1	1	FastEthernet0/0	foo	1
172.31.254.0/30		Range	100%	LAB-R1.dsco-L	172.31.254.1...	27, 28	FastEthernet0/0		10, 11
172.31.21.0/27		Range	0%	LAB-R2.dsco-L	172.31.21.1	19	Loopback21		
172.31.21.32/27		Range	0%	LAB-R2.dsco-L	172.31.21.33	20	Loopback22		
172.31.21.64/27		Range	0%	LAB-R2.dsco-L	172.31.21.65	21	Loopback23		
172.31.21.96/27		Range	0%	LAB-R2.dsco-L	172.31.21.97	22	Loopback24		
172.31.21.128/...		Range	0%	LAB-R2.dsco-L	172.31.21.129	23	Loopback25		
172.31.21.160/...		Range	0%	LAB-R2.dsco-L	172.31.21.161	24	Loopback26		
172.31.21.192/...		Range	0%	LAB-R2.dsco-L	172.31.21.193	25	Loopback27		
172.31.21.224/...		Range	0%	LAB-R2.dsco-L	172.31.21.225	26	Loopback28		
172.31.22.0/24		Range	0%	LAB-R2.dsco-L	172.31.22.1	9	Loopback10		

## Men & Mice Management Console

### Platforms:

- Windows Server 2008, 2008 R2, 2012, 2012 R2, 2016

### Hardware:

- 1.4 GHz x86-64
- 1 GB Memory
- 250 MB of free disk space

## Men & Mice Central

### Platforms:

- Windows Server 2008, 2008 R2, 2012, 2012 R2, 2016
- Red Hat Enterprise Linux 6, 7 for x86
- CentOS 6, 7 for x86
- SuSE Enterprise Linux 11/12/13 for x86
- Ubuntu 12.04 LTS, 14.04 LTS, 16.04 LTS

### Hardware:

- 1 GB Memory
- 1 GB of free disk space

### Database Server Software:

- MSSQL Server 2008 R2, 2012, 2014, 2016

## Third-Party Intergration

- VMware plug-in

## Men & Mice DNS and DHCP Server Controllers

### Platforms:

- Windows Server 2008, 2008 R2, 2012, 2012 R2, 2016 with appropriate Microsoft service installed
- Red Hat Enterprise Linux 6, 7 or x86
- Solaris 10 Ultrasparc for x86
- CentOS 6, 7 for x86
- SuSE Enterprise Linux 11/12/13 for x86
- Ubuntu 12.04 LTS, 14.04 LTS, 16.04 LTS

### Hardware:

- 1 GB Memory
- 250 MB of free disk space

## DNS & DHCP Software

- Microsoft DNS / DHCP 2008, 2008 R2, 2012, 2012 R2, 2016
- ISC BIND 9.6 - 9.11
- ISC DHCP 3.0.6 - 4.3.5
- ISC Kea DHCP 11.0
- Cisco IOS with DHCP support 12.3 - 15.1
- Unbound 1.4.22 - 1.6.0
- PowerDNS Authoritative Server 3.4 and above with MySQL backend

## Men & Mice Web Application

### Platforms:

- Windows Server 2008, 2008 R2, 2012, 2012 R2, 2016
- Red Hat Enterprise Linux 6, 7 for x86
- CentOS 6, 7 for x86
- SuSE Enterprise Linux 11/12/13 for x86
- Ubuntu 12.04 LTS, 14.04 LTS, 16.04 LTS

### Web Server Software:

- Apache 2.2/2.4
- Microsoft IIS

### Hardware:

- 1 GB Memory
- 250 MB of free disk space

## The Men & Mice Suite Architecture

is based on a 3-tier design with a database layer, logic layer and an interface layer with 4 types of user interfaces:

- Management Console
- Web browser Interface
- SOAP, JSON-RPC and REST API

## Supported Cloud Services

- Amazon Route 53
- Azure DNS
- OpenStack

